

IGORA ROYAL®

REdiscover

*true color in
high definition*

CONVERSION GUIDE
Your quick way to convert to
IGORA ROYAL

**GUÍA DE
CONVERSIÓN**

La forma más rápida para
cambiarte a **IGORA ROYAL**

INSTRUCTIONS
INSTRUCCIONES DE USO

DEAR COLORIST,

Welcome to IGORA ROYAL - True Color in High Definition. Developed with colorists for colorists it delivers up to 100% white hair coverage, vibrant and long lasting color results.

We are committed to true performance, true inspiration and true partnership. Therefore, we understand it is crucial to provide any assistance necessary to ensure you become absolutely confident using our colorations.

This guide serves as a means of orientation to easily convert from your previous color product to IGORA ROYAL.

In an easy to use table format you can find a shade by shade translation to the IGORA ROYAL portfolio or a corresponding mixing recommendation.

NOTE: The result of a coloration is always influenced by the natural base, the existing base, the hair quality and structure, the percentage of white hair as well as the chosen shade and the desired levels of lift. Therefore, please refer to this Conversion Guide only as orientation. As every coloration has its unique character, minor deviations may occur.

We wish you great fun coloring with the IGORA ROYAL color regimen. In case of any questions regarding this Conversion Guide please contact your local SKP hotline (see back for details).

Your Schwarzkopf Professional Team

ESTIMADO COLORISTA,

Bienvenido a IGORA Royal: Color Real de Alta Definición. Desarrollado por coloristas para coloristas. Proporciona resultados de color 100% reales, intensos y duraderos.

Nuestro compromiso es conseguir resultados reales, inspiración real y una colaboración real. Por lo tanto, entendemos que es crucial proporcionarte la ayuda necesaria para que confíes plenamente en nuestra coloración.

Esta guía te servirá como orientación para convertirte fácilmente de tu anterior marca de coloración hacia IGORA ROYAL.

Ponemos a tu disposición tablas en las que encontrarás los tonos equivalentes de IGORA Royal o una mezcla equivalente recomendada.

NOTA: El resultado de la coloración siempre se ve afectado por la base natural, o base existente, la calidad del cabello y su estructura, el porcentaje de canas, el tono escogido y los tonos que se deseen aclarar. Por consiguiente, utiliza esta Guía de Conversiones sólo como orientación. Como bien sabrás, todas las coloraciones tienen un carácter único y, por eso, debes tener en cuenta que pueden darse pequeñas variaciones.

Deseamos que disfrutes con IGORA Royal. En caso de que tengas alguna duda sobre la Guía de Conversión, sólo tienes que llamar a nuestra línea directa de SKP (ver reverso).

Tu Equipo de Schwarzkopf Professional



IGORA ROYAL NUMBERING SYSTEM /

SISTEMA DE NUMERACIÓN

| COLOR LEVEL | TONE DIRECTION |
|-----------------------|---------------------------|
| 1- black | -0 natural (neutral) |
| | -1 cendré (blue/violet) |
| | -2 ash (blue) |
| 3- dark brown | -3 matte (green) |
| 4- medium brown | -4 beige (muted gold) |
| 5- light brown | -5 gold (gold) |
| 6- dark blonde | -6 chocolate (warm brown) |
| 7- medium blonde | -7 copper (orange) |
| 8- light blonde | -8 red (red) |
| 9- extra light blonde | -9 violet (violet) |

The system is based on a combination of numbers.

The number in front of the dash (5-880):

Indicates the color level of the shade. Indicates the ideal base to use the shade on in order to achieve true-to-swatch results.

The number(s) after the dash (5-880):

The first number after the dash shows the primary color tone direction (dominant color tone). The second number after the dash shows the secondary color tone direction (minor color tone). Two identical numbers after the dash indicate an intense color. A zero as the third number (in IGORA ROYAL ABSOLUTES AGE BLEND) indicates the additional neutral tone for 100% white hair coverage.

| NIVEL DE COLOR: | DIRECCIÓN DEL TONO: |
|--------------------|----------------------------|
| 1- negro | -0 natural (neutro) |
| | -1 ceniza (azul/violeta) |
| | -2 humo (azul) |
| 3- castaño oscuro | -3 mate (verde) |
| 4- castaño medio | -4 beige (dorado tenue) |
| 5- castaño claro | -5 dorado (dorado) |
| 6- rubio oscuro | -6 marrón (castaño cálido) |
| 7- rubio medio | -7 cobre (naranja) |
| 8- rubio claro | -8 rojo (rojo) |
| 9- rubio muy claro | -9 violeta (violeta) |

El sistema se basa en la combinación de hasta 4 números.

El número antes del guión (5-880):

Indica el nivel del color del tono. Muestra la base ideal sobre la cual aplicar el tono para conseguir resultados de color fieles a la carta de color.

El(los) número(s) después del guión (5-880):

El primer número después del guión indica la dirección del color principal (color dominante). El segundo número después del guión indica la dirección del color secundario (color menor). Dos números iguales después del guión indican que se trata de un color intenso. Un cero en el tercer lugar (en IGORA ROYAL ABSOLUTES AGE BLEND) indica el tono neutro adicional para una cobertura de 100% de canas.

DEVELOPER USAGE / USO DE LA LOCIÓN ACTIVADORA

LEVELS OF LIFT / NIVELES DE ACLARACIÓN

5 LEVELS / NIVELES

4 LEVELS / NIVELES

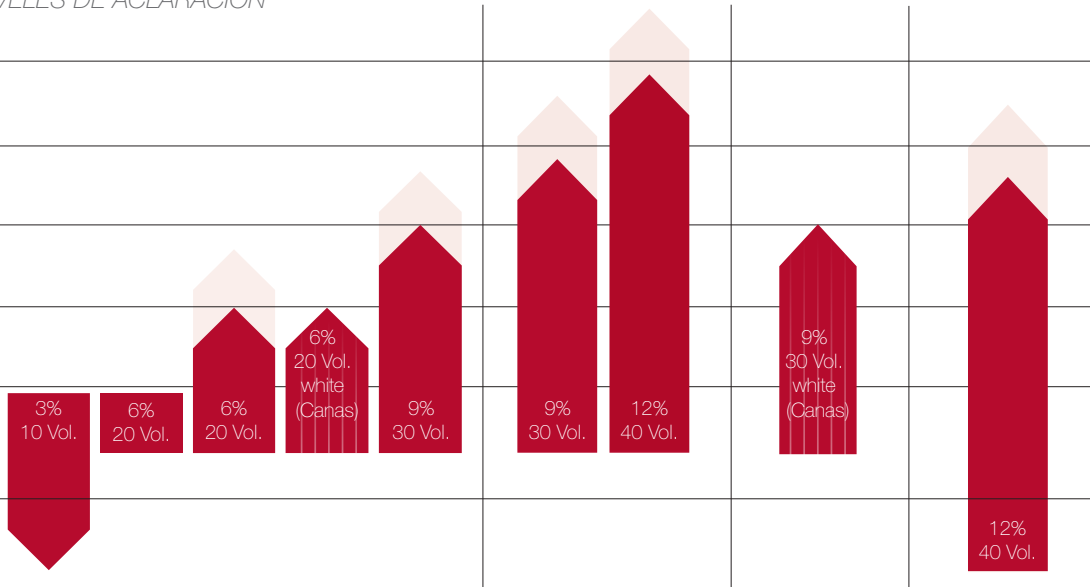
3 LEVELS / NIVELES

2 LEVELS / NIVELES

1 LEVEL / NIVELES

0 LEVEL / NIVELES

COLORING DARKER / PARA OSCURECER EL COLOR



IGORA ROYAL
Core Assortment

IGORA ROYAL
Highlifts

IGORA ROYAL
Absolutes

IGORA ROYAL
Fashion Lights

| | | |
|---------------|--|---|
| 3% (10 Vol.) | <ul style="list-style-type: none"> - Coloring darker - White hair coverage - Color deposit on pre-lightened hair - Coloring with IGORA ROYAL PEARLESCENCE, IGORA ROYAL ABSOLUTES SILVERWHITE and Pastel Shades | <ul style="list-style-type: none"> - Para oscurecer el color - Cubrimiento de canas - Depósito de color en cabello previamente aclarado - Para colorear con IGORA ROYAL PEARLESCENCE, IGORA ROYAL ABSOLUTES SILVERWHITE y los tonos pastel |
| 6% (20 Vol.) | <ul style="list-style-type: none"> - Tone on tone coloration - White hair coverage - Lifting 1-2 levels EXTRA NOTE: Can achieve 2 levels of lift on fine hair with IGORA ROYAL Core EXTRA NOTE: White hair coverage with IGORA ROYAL ABSOLUTES on more than 90% white hair | <ul style="list-style-type: none"> - Coloración de tono sobre tono - Cubrimiento de canas - Para aclarar 1-2 niveles NOTA EXTRA: Puede lograr 2 niveles de aclaración en cabello delgado con IGORA ROYAL Core NOTA EXTRA: Cubrimiento de canas con IGORA ROYAL ABSOLUTES para cabellos con más del 90% de canas |
| 9% (30 Vol.) | <ul style="list-style-type: none"> - Lifting 2-3 levels - Coloring with -00 series - White hair coverage with IGORA ROYAL ABSOLUTES EXTRA NOTE: Can achieve 3 levels of lift on fine hair with IGORA ROYAL Core EXTRA NOTE: Lifting 3-4 levels with the IGORA ROYAL HIGHLIFTS (12-) | <ul style="list-style-type: none"> - Para aclarar 2-3 niveles - Coloración con la serie -00 - Cubrimiento de canas con IGORA ROYAL ABSOLUTES Hasta 3 niveles de aclaración con la serie (10-) de IGORA ROYAL HIGHLIFTS NOTA EXTRA: Puede lograr 3 niveles de aclaración en cabello delgado con IGORA ROYAL Core NOTA EXTRA: Realce de 3-4 niveles con la serie (12-) de IGORA ROYAL HIGHLIFTS |
| 12% (40 Vol.) | <ul style="list-style-type: none"> - Coloring with IGORA ROYAL FASHION LIGHTS - Lifting up to 3 levels with IGORA ROYAL PEARLESCENCE Lift & Tone shades - Lifting 3-4 levels with IGORA ROYAL HIGHLIFTS (10-) - Lifting 4-5 levels with IGORA ROYAL HIGHLIFTS (12-)* | <ul style="list-style-type: none"> - Coloración con IGORA ROYAL FASHION LIGHTS - Hasta 3 niveles de aclaración con los tonos Lift & Tone de IGORA ROYAL PEARLESCENCE - 3-4 niveles de aclaración con la serie (10-) de IGORA ROYAL HIGHLIFTS - 4-5 niveles de aclaración con la serie (12-) de IGORA ROYAL HIGHLIFTS |

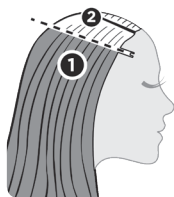
*4-5 levels of lift are achievable on natural base 6 and lighter.

*4-5 tons de aclaramento são alcançados em bases naturais 6 e mais.

APPLICATION METHODS / MÉTODOS DE APLICACIÓN

Apply to dry, unwashed hair / Aplicar sobre cabello seco no lavado.

APPLICATION ON VIRGIN HAIR



APPLICATION

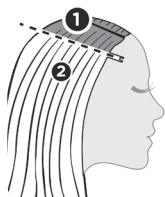
- Apply the color first on mid-lengths and ends taking fine sections
- Leave about 1 in. of the re-growth area out
- Leave to develop for 10 minutes (15 minutes for Fashion Shades)
- Apply the color to the re-growth area
- Leave to develop for 30 - 45 minutes

APLICACIÓN SOBRE CABELLO VIRGEN

APLICACIÓN

- Primero, aplicar el color en medios y puntas cogiendo secciones finas
- Dejar un margen de unos 1 in. desde la raíz
- Tiempo de exposición: 10 minutos (15 minutos en Tonos Moda)
- Ahora, aplicar el color en la raíz
- Tiempo de exposición: 30 - 45 minutos

RE-GROWTH APPLICATION



APPLICATION

- Apply the IGORA ROYAL color only to the re-growth area first taking fine sections
- Leave to develop for 15 - 20 minutes
- Apply the color evenly to mid-lengths and ends
- Leave to develop for 10 - 15 minutes

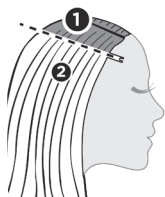
APLICACIÓN EN EL RECRECIMIENTO

APLICACIÓN

- Aplicar el color únicamente en la zona de recrecimiento cogiendo secciones finas
- Tiempo de exposición: 15 - 20 minutos
- Ahora, aplicar el color en medios y puntas
- Tiempo de exposición: 10 - 15 minutos

DUAL SYSTEM APPLICATION

This dual system application is a professional application method that combines permanent hair color for the re-growth area with demi- or semi-permanent hair colors for mid-lengths and ends. This system keeps hair lengths and ends in optimal condition for intensive shine and a gentle touch.



APPLICATION

- Apply the permanent IGORA ROYAL color to the re-growth area first taking fine sections
- Leave to develop for 15 - 20 minutes (Development time depends on the product to be used for mid-lengths and ends)
- Apply IGORA VIBRANCE demi-permanent color to mid-lengths and ends
- Development time depends on the desired intensity and the instruction for use

APLICACIÓN DUAL

El método de Aplicación Dual combina la aplicación de coloración permanente en la zona de recrecimiento con coloración demipermanente o semipermanente en medios y puntas. Este sistema mantiene los medios y puntas en perfectas condiciones a la vez que proporciona un brillo intenso y un tacto suave en el cabello.

APLICACIÓN

- Primero, aplicar el tono de coloración permanente deseado de IGORA ROYAL en la zona de recrecimiento cogiendo secciones finas
- Tiempo de exposición: 15 - 20 minutos (El tiempo de exposición dependerá del producto que se aplique en medios y puntas)
- Aplicar el mismo tono de coloración demi-permanente, IGORA VIBRANCE en medios y puntas
- El tiempo de exposición dependerá de la intensidad que se desee alcanzar y de las instrucciones de uso del producto

MIXING / MEZCLA

IGORA ROYAL



1:1



60 ml IGORA ROYAL Color Crème
CREMA DE COLORACIÓN

: 60 ml IGORA ROYAL Oil Developer
Oil Developer

DEVELOPMENT TIME / TIEMPO DE EXPOSICIÓN



30 - 45 min/min

5 - 30 minutes for all IGORA ROYAL Pastel Shades. NOTE: Additional heat is optional and reduces the development time by a third.

5 - 30 minutos para los tonos Pastel de IGORA ROYAL. NOTA: El calor adicional es opcional y reduce el tiempo de exposición en 1/3 parte.

IGORA ROYAL
Special Blonde Shades
12-series / 12-Serie



1:2



60 ml IGORA ROYAL Color Crème
CREMA DE COLORACIÓN

: 120 ml IGORA ROYAL Oil Developer
Oil Developer

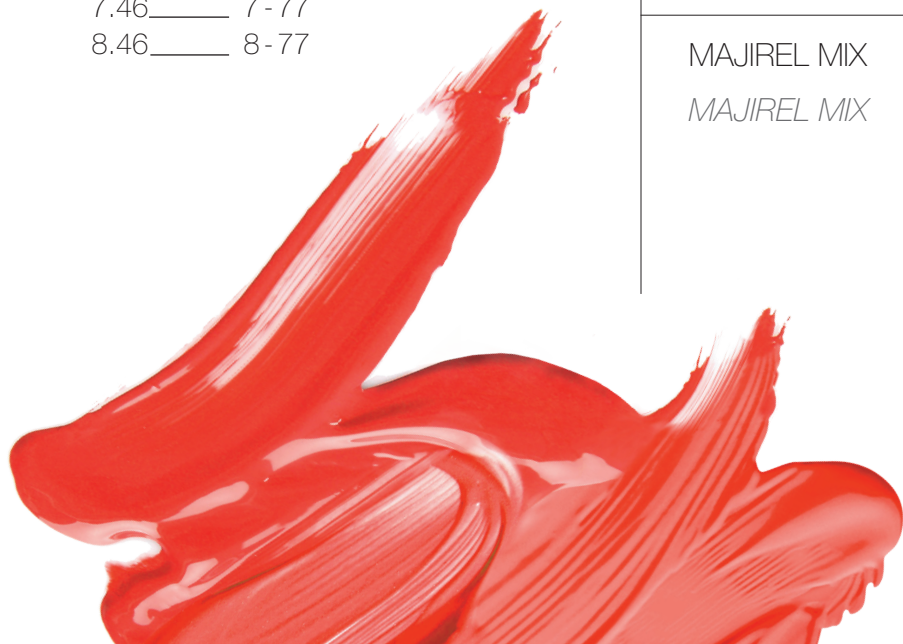
RINSING / ENJUAGUE

- Emulsify and rinse out thoroughly until water runs clear.
- Shampoo with BC BONACURE pH 4.5 COLOR FREEZE Shampoo and apply BC BONACURE pH 4.5 COLOR FREEZE Conditioner or Treatment depending on hair needs.
- Emulsionar y enjuagar bien el cabello hasta que el agua salga clara.
- Lavar el cabello con BC BONACURE pH 4.5 COLOR FREEZE y aplicar BC BONACURE pH 4.5 COLOR FREEZE Acondicionador Protector del Color BC BONACURE pH 4.5 COLOR FREEZE Tratamiento Protector del Color, dependiendo de las necesidades del cabello.

▶ I GORA ROYAL

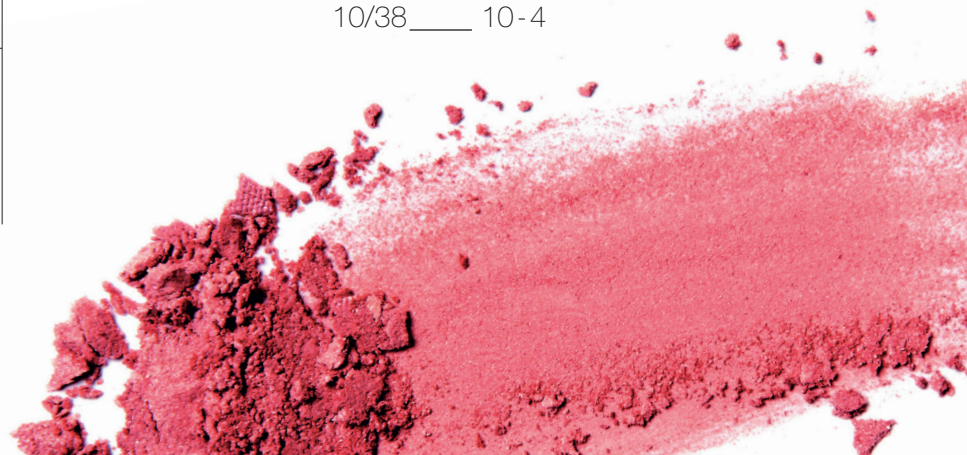
| | Majirel | IGORA ROYAL | | Majirel | IGORA ROYAL |
|--|-------------|--------------------|---|---------------|-----------------|
| FUNDAMENTALS / NATURALS | 1 _____ | 1-0 | ASH / CENDRÉ | 8.01 _____ | 8-00 |
| | 3 _____ | 3-0 | <i>CENIZA</i> | 10.01 _____ | 9.5-1 |
| <i>BÁSICOS / NATURALES</i> | 4 _____ | 4-0 | | 5.1 _____ | 5-63 |
| | 5 _____ | 5-0 | | 6.1 _____ | 6-63 |
| | 6 _____ | 6-0 | | 7.1 _____ | 7-00 |
| | 7 _____ | 7-0 | | 8.1 _____ | 8-00 |
| | 8 _____ | 8-0 | | 9.1 _____ | 9-00 |
| | 9 _____ | 9-0 | | 10.1 _____ | 9.5-0 |
| | 10 _____ | 10-0 | | 10 ½ .1 _____ | 9.5-4 |
| | 10 ½ _____ | 10-0 | | 2.10 _____ | 1-1 |
| | | | | 4.11 _____ | 4-13 |
| | | | | 7.11 _____ | 7-00 |
| INTENSE FUNDAMENTALS / NATURALS | 4.0 _____ | 4-0 | METALLIC / MATTE | 5.07 _____ | 5-0 |
| | 5.0 _____ | 5-00 | <i>METÁLICO / MATE</i> | 6.07 _____ | 6-00 |
| | 6.0 _____ | 6-63 | | 8.07 _____ | 8-00 |
| INTENSOS FUNDAMENTALES / NATURALES | 7.0 _____ | 6-00 | | | |
| | 8.0 _____ | 7-0 | WARM BROWN / WARM BEIGE | 5.31 _____ | 5-57 |
| | 9.0 _____ | 9-0 | | 7.31 _____ | 7-55 |
| | | | | 8.31 _____ | 9-65 |
| COOL BROWN / COOL BEIGE | 5.02 _____ | 4-65 | <i>MARRÓN CÁLIDO / BEIGE CÁLIDO</i> | 9.31 _____ | 9-4 |
| | 5.12 _____ | 6-12 | | 10.31 _____ | 9-55 |
| <i>MARRÓN FRÍO / BEIGE FRÍO</i> | 6.13 _____ | 7-00 | | 5.32 _____ | 6-68 |
| | 7.13 _____ | 7-0 | | 6.32 _____ | 7-65 |
| | 8.13 _____ | 9-00 | | 4.35 _____ | 4-65 |
| | 9.13 _____ | 9.5-4 | | 5.35 _____ | 6-68 |
| | 6.14 _____ | 5-65 | | 6.35 _____ | 6-65 |
| | 4.15 _____ | 3-65 | | 7.35 _____ | 7-65 |
| | 5.15 _____ | 5-4 | | 6.41 _____ | 4-65 |
| | 6.15 _____ | 6-1 + 0-99 (19:1) | | 4.45 _____ | 5-7 + 4-0 (3:1) |
| | 6.23 _____ | 5-4 | | 5.45 _____ | 5-7 |
| | 7.23 _____ | 7-4 | | 6.45 _____ | 7-57 |
| | 9.23 _____ | 9-65 | | 5.5 _____ | 4-68 |
| | 7.24 _____ | 6-68 | | 4.51 _____ | 4-65 |
| | 5.25 _____ | 4-65 | | 5.52 _____ | 6-68 |
| | | | | 6.52 _____ | 6-68 |
| IRISÉ | 4.16 _____ | 4-99 | | 7.52 _____ | 7-57 |
| | 3.20 _____ | 4-99 | | 6.53 _____ | 5-57 |
| <i>IRISADOS</i> | 4.20 _____ | 5-99 | | | |
| | 5.20 _____ | 6-99 | | | |
| | 10.21 _____ | 9.5-4 | | | |
| | 9.22 _____ | 9-0 + 9.5-49 (1:1) | | | |
| | 4.26 _____ | 4-99 | | | |
| | 6.26 _____ | 5-99 | | | |

| | Majirel | IGORA ROYAL | | Majirel | IGORA ROYAL |
|-----------------|---------|----------------------------|---------------------|-------------|-------------------------------|
| GOLD | 6.03 | 6-5 | RED | 6.54 | 6-68 |
| <i>DORADO</i> | 7.03 | 7-55 | <i>ROJOS</i> | 5.55 | 4-68 + 5-7 + 0-88 (4:4:1) |
| | 8.03 | 7-55 | | 4.56 | 4-88 |
| | 9.03 | 9-55 | | 5.56 | 5-88 |
| | 10.03 | 9.5-4 | | 5.6 | 4-68 + 5-7 + 0-88 (4:4:1) |
| | 4.3 | 4-65 | | 6.6 | 6-77 + 7-0 + 0-88 (12:9:1) |
| | 5.3 | 5-6 | | 5.60 | 4-88 |
| | 6.3 | 5-65 | | 6.60 | 5-88 |
| | 7.3 | 6.5 + 0-55 (1:0.2) | | 5.62 | 5-99 + 5-88 (3:2) |
| | 8.3 | 7-55 | | 6.62 | 6-68 + 6-88 (4:1) |
| | 9.3 | 9-55 | | 7.62 | 4-88 5-7 (2:1) |
| | 8.30 | 8-55 + 0-55 (4:1) | | 5.64 | 5-7 + 5-88 (2:1) |
| | 8.33 | 8-55 + 0-55 (6:1) | | 6.64 | 6-77 + 6-88 (7:1) |
| | 9.33 | 9-55 + 0-77 (12:1) | | 4.65 | 6-0 + 4-88 + 0-77 (3:2:2) |
| | 6.34 | 5-57 | | 6.65 | 6-68 + 6-88 (3:2) |
| | 8.34 | 7-57 | | 6.66 | 6-68 + 6-88 (3:1) |
| COPPER | 8.04 | 9-55 + 8-77 + 0-55 (8:6:3) | MAJIBLOND | 900 | 12-4 |
| <i>COBRIZOS</i> | 9.04 | 9-674 + D-0 (3:1) | ULTRA | 900-S | 12-4 |
| | 4.4 | 5-57 | | 901 | 12-2 |
| | 5.4 | 5-57 | <i>MAJIBLOND</i> | 901-S | 12-4 |
| | 7.4 | 7-57 | <i>ULTRA</i> | 902 | 12-4 + 12-19 + 0-89 (8:2:0.1) |
| | 7.40 | - | | 902-S | 12-4 + 12-19 (8:3) |
| | 5.42 | 5-57 | | 903-S | 12-4 |
| | 6.42 | 6-68 + 7-57 (1:1) | | 904 | 12-4 + 9.5-17 (3:1) |
| | 7.42 | 7-57 | | 911 | 9.5-1 |
| | 8.42 | 7-57 | | 913 | 12-1 |
| | 7.43 | 7-57 + 8-77 + 0-55 (7:4:4) | | 921 | 12-19 + 12-0 (3:1) |
| | 8.43 | 9-7 | | 934 | 12-0 + 0-55 + 9-481 (8:1:2) |
| | 6.44 | 7-77 + 0-88 (2:1) | MAJICONTRAST | Copper | L-77 |
| | 7.44 | 8-77 + 9-55 + 0-55 (9:4:1) | <i>MAJICONTRAST</i> | Pure Copper | L-77 |
| | 7.45 | 6-77 + 0-88 (4:1) | | Red | L-88 |
| | 8.45 | 9-55 + 8-77 (2:1) | | Magenta | L-89 |
| | 5.46 | 5-7 | MAJIREL MIX | Copper | 0-77 |
| | 6.46 | 6-77 | <i>MAJIREL MIX</i> | Red | 0-88 |
| | 7.46 | 7-77 | | Violet | 0-99 |
| | 8.46 | 8-77 | | Blue | 0-22 |
| | | | | Green | 0-33 |



▶ IGORA ROYAL

| | Koleston | IGORA ROYAL | | Koleston | IGORA ROYAL |
|-----------------------|----------|---------------------------|-----------------------|----------|----------------------------|
| NATURALS | 4/ | 4-0 | NATURAL BROWN | 4/07 | 4-6 |
| <i>MAJIREL MIX</i> | 5/ | 5-0 | <i>CASTAÑO</i> | 5/07 | 5-65 |
| | 6/ | 6-0 | <i>NATURAL</i> | 6/07 | 5-5 |
| | 7/ | 7-0 | | 7/07 | 7-55 |
| | 8/ | 8-0 | | 8/07 | 9-65 |
| | 2/0 | 1-0 | ASH | 5/1 | 5-1 |
| | 3/0 | 4-0 | <i>CENIZA</i> | 6/1 | 6-1 |
| | 4/0 | 5-0 | | 7/1 | 7-1 |
| | 5/0 | 6-0 | | 8/1 | 8-1 |
| | 6/0 | 7-0 | | 9/1 | 9-1 |
| | 7/0 | 7-0 | | 10/1 | 10-1 |
| | 8/0 | 9-00 | | 11/1 | 10-1 |
| | 9/0 | 9-0 | | 7/11 | 7-1 |
| | 10/0 | 10-0 | | 8/11 | 8-11 |
| | 11/0 | 12-4 | | 9/11 | 9-1 |
| | 22/0 | 1-0 | | 9/16 | 9.5-49 + 9.5-22 (1:1) |
| | 33/0 | 4-0 | | 10/16 | 9.5-0 |
| | 44/0 | 5-0 | | 7/17 | 8-65 |
| | 55/0 | 5-0 | | 9/17 | 9.5-4 |
| | 66/0 | 6-00 | MATTE | 6/2 | 6-55 + 0-33 (10:1) |
| | 77/0 | 7-00 | <i>MATE</i> | 7/2 | 7-55 + 0-33 (10:1) |
| | 88/0 | 8-00 | | 8/2 | 7-55 + 0-33 (1:0.08) |
| | 99/0 | 9-00 | GOLD / COPPER | 5/3 | 4-5 |
| | 3/00 | 4-0 | <i>DORADO / COBRE</i> | 6/3 | 6-4 |
| | 4/00 | 5-00 | | 7/3 | 8-55 |
| | 5/00 | 5-4 | | 8/3 | 8-55 + 0-77 (10:1) |
| | 6/00 | 7-00 | | 9/3 | 9.5-4 + 0-55 (5:1) |
| | 7/00 | 8-4 | | 10/3 | 9.5-4 |
| | 8/00 | 9-00 | | 11/3 | 12-4 |
| | 9/00 | 9-0 | | 6/34 | 6-77 + 5-7 (3:1) |
| | 10/00 | 10-4 | | 7/34 | 7-55 + 7-77 + 0-55 (8:6:3) |
| NATURAL ASH | 7/01 | 8-00 | | 8/34 | 8-77 + 9-7 + 0-55 (3:1:1) |
| <i>NATURAL CENIZA</i> | 8/01 | 9-00 | | 6/35 | - |
| | 9/01 | 9-00 | | 5/37 | 5-57 |
| NATURAL GOLD | 6/03 | 6-5 | | 7/37 | 7-57 |
| <i>DORADO</i> | 7/03 | 8-65 | | 7/38 | 8-0 + 9.5-18 (2:1) |
| <i>NATURAL</i> | 8/03 | 8-65 | | 8/38 | 9.5-0 + 9-65 + 9.5-18 |
| | 9/03 | 9-55 | | 9/38 | 9.5-0 |
| | 10/03 | 9.5-0 | | 10/38 | 10-4 |
| NATURAL RED | 8/04 | 8-55 + 7-77 + D-0 (1:1:2) | | | |
| <i>ROJO NATURAL</i> | 9/04 | 8-55 + 7-77 + D-0 (1:1:3) | | | |
| | 10/04 | 9-55 + 7-77 + D-0 (4:1:1) | | | |



| Koleston | | IGORA ROYAL | Koleston | | IGORA ROYAL |
|-------------------------|-------------------|------------------------------|-----------------------|---------------------|--------------------------------|
| RED <i>ROJO</i> | 5/4 | 5-57 | PEARL | 2/8 | 1-1 |
| | 6/4 | 6-77 | <i>PERLA</i> | 9/8 | 9.5-22 + 0-22 (10:0.1) |
| | 7/4 | 7-57 + 7-77 (3:2) | | 10/8 | 9.5-1 |
| | 8/4 | 8-77 | CENDRÉ VIOLET | 8/96 | 9.5-4 + 9-674 + D-0 (2:1:0.5) |
| | 5/41 | 77-57 + 5-7 (3:2) | <i>VIOLETA CENIZA</i> | 9/96 | 9.5-4 + 9.5-49 (3:1) |
| | 6/41 | 6-77 + 7-0 + 0-77 (2:1:0.2) | | 10/96 | 9.5-49 + 10-0 (2:1) |
| | 7/41 | - | INTENSE RED | 77/43 | 6-88 + 0-77 (2:1) |
| | 8/41 | 7-57 + 8-55+0-88 (2:1:0.4) | <i>ROJO INTENSO</i> | 88/43 | 9-7 + 0-88 (3:1) |
| | 6/43 | 6-68 + 7-77+0-88 (4:2:1) | | 44/44 | 5-88 |
| | 7/43 | 7-77 + 7-55+0-55 (4:3:1) | | 55/44 | 7-57 + 6-88 (3:1) |
| | 8/43 | 8-55 + 8-77+0-55 (5:3:3) | | 66/44 | 7-77 + 6-88 + 0-88 (3:2:2) |
| | 6/45 | 5-88 | | 77/44 | 8-77 + 6-88 + 0-88 (4:2:1) |
| | 7/45 | 7-77 + 6-68 + 0-88 (1:1:1) | | 55/46 | 5-88 |
| | 8/45 | 9-7 + 6-88 (2:1) | | 66/46 | 6-88 |
| | 5/46 | 5-7 + 5-88 (3:2) | | 77/46 | 6-88 + 8-77 + 0-77 (3:2:1) |
| | 8/46 | - | | 33/55 | 3-68 |
| | 7/47 | - | | 44/55 | 4-88 |
| | 5/5 | 4-68 + 5-7 + 0-88 (1:1:0.15) | | 55/55 | 7-57 + 6-88 (3:1) |
| | 6/5 | 6-68 + 6-5 (3:1) | | 66/55 | 5-7 |
| | 9/5 | - | | 66/56 | 6-68 + 5-7 + 0-88 (1:1:1) |
| 4/6 | 4-68 + 4-88 (1:1) | | 44/65 | 5-57 + 4-88 (3:1) | |
| 9/65 | - | | 55/65 | 9-98 + 5-99 (5:1) | |
| | | | 33/66 | 4-99 | |
| | | | 44/66 | 6-99 + 9.5-22 (2:1) | |
| | | | 55/66 | 5-99 + 0-99 (7:1) | |
| BROWN <i>CASTAÑO</i> | 5/7 | 6-00 + 5-5 (2:1) | SPECIAL BLONDE | 12/0 | 12-0 |
| | 6/7 | 6-6 | <i>RUBIO ESPECIAL</i> | 12/03 | 12-4 |
| | 7/7 | 6-65 | | 12/07 | 12-0 |
| | 8/7 | 9-4 + 9-7 + 0-55 (8:2:1) | | 12/1 | 12-0 + 12-2 (15:1) |
| | 9/7 | 9-674 + D-0 (3:1) | | 12/11 | 12-1 + 12-2 (1:1) |
| | 4/71 | 4-6 | | 12/16 | 12-2 + 12-1 (2:1) |
| | 5/71 | 5-65 | | 12/17 | 12-4 + 9.4-49 (20:1) |
| | 6/71 | 6-4 | | 12/22 | - |
| | 7/71 | 7-65 | | 12/3 | 12-0 + 0-55 + 9-481 (8:1:2) |
| | 8/71 | 9-65 | | 12/61 | 12-11 + 12-19 + 0-11 (1:1:0.1) |
| | 6/73 | 5-65 | | 12/7 | 12-4 |
| | 7/73 | 7-65 + 0-55 (2.5:1) | | 12/81 | 12-1 |
| | 8/73 | 8-55 + 0-77 (10:1) | | 12/89 | 12-2 |
| | 9/73 | 8-55 + 0-77 (10:1) | | 12/96 | 12-19 |
| | 6/74 | 6-65 + 0-77 (2:1) | SPECIAL MIX | 0/11 | - |
| | 8/74 | 8-65 + 0-77 (5:1) | <i>SPECIAL MIX</i> | 0/22 | 0-33 |
| | 4/75 | 4-65 | | 0/28 | - |
| | 5/75 | 5-68 | | 0/33 | 0-55 |
| | 6/75 | 6-68 | | 0/43 | 0-77 |
| | 7/75 | 6-68 + 7-1 + 0-88 (4:2:1) | | 0/45 | 0-88 |
| | 4/77 | 6-68 | | 0/65 | 0-89 |
| | 5/77 | 5-68 | | 0/66 | 0-99 |
| | 6/77 | 5-57 | | 0/81 | - |
| | 7/77 | 6-65 | | 0/88 | 0-22 |



▶ IGORA ROYAL

| | Topchic | IGORA ROYAL | | Topchic | IGORA ROYAL |
|-----------------------|-----------|----------------------------|------------------------|------------|-----------------------------|
| NATURAL | 2N _____ | 1-0 | GOLD / BEIGE | 4G _____ | 3-65 |
| <i>NATURAL</i> | 3N _____ | 1-0 | <i>DORADO / BEIGE</i> | 6G _____ | 6-4 |
| | 4N _____ | 4-0 | | 7G _____ | 6-5 |
| | 5N _____ | 5-0 | | 8G _____ | 9.5-0 + 8-55 (3:1) |
| | 6N _____ | 6-0 | | 9G _____ | 9.5-4 + 0-55 (5:1) |
| | 7N _____ | 7-0 | | 9GN _____ | 9-65 + 0-55 (10:1) |
| | 8N _____ | 8-0 | | 5GB _____ | 6-65 + 0-77 (5:1) |
| | 9N _____ | 9-0 | | 6GB _____ | 7-65 + 0-77 (5:1) |
| | 10N _____ | 10-0 | | 7GB _____ | 8-65 + 0-77 (20:1) |
| EXTRA NATURAL | 4NN _____ | 4-0 | | 8GB _____ | 9-65 + 7-57 (10:1) |
| <i>EXTRA NATURAL</i> | 5NN _____ | 5-00 | | 9GB _____ | 9-55 + 7-57 (10:1) |
| | 6NN _____ | 6-00 | | 10GB _____ | 10-4 |
| | 7NN _____ | 7-00 | BROWN / BLONDE | 4B _____ | 4-65 |
| | 8NN _____ | 8-00 | <i>CASTAÑO / RUBIO</i> | 5B _____ | 5-65 |
| | 9NN _____ | 9-00 | | 6B _____ | 6-4 |
| ASH | 2A _____ | 1-0 | | 7B _____ | 6-6 |
| <i>CENIZA</i> | 5A _____ | 5-1 | | 8B _____ | 8-65 |
| | 6A _____ | 6-0 | | 10B _____ | 10-4 |
| | 7A _____ | 6-00 | | 5BG _____ | 5-65 |
| | 8A _____ | 7-0 | | 7BG _____ | 7-55 |
| | 9A _____ | 9-1 | | 5BM _____ | 6-55 + 0-33 (1:0.15) |
| | 10A _____ | 9.5-0 | | 6BM _____ | 7-55 + 0-33 (1:0.15) |
| NATURAL ASH | 6NA _____ | 6-63 | | 7BN _____ | 5-57 |
| <i>CENIZA NATURAL</i> | 7NA _____ | 6-00 | | 6BS _____ | 6-63 |
| | 8NA _____ | 7-0 | | 6BK _____ | 5-57 + 6-77 (1:1) |
| | 9NA _____ | 9-0 | | 6BKV _____ | 6-68 + 0-99 (20:1) |
| SILVER | 6SB _____ | 6-1 + 0-22 (10:0.1) | | 8BKP _____ | 9-4 + 9.5-18 (3:2) |
| <i>PLATA</i> | 7SB _____ | 8-1 + 0-22 (10:0.5) | COPPER | 5K _____ | 6-88 + 6-1 + 0-88 (2:1:0.6) |
| | 8SB _____ | 8-11 + 9-1 (1:1) | <i>COBRE</i> | 6K _____ | 6-77 + 6-88 (6:1) |
| MATTE | 5MB _____ | 6-55 + 0-33 (1:0.15) | | 7K _____ | 9-7 + 7-57 (3:1) |
| <i>MATE</i> | 6MB _____ | 6-63 | | 8K _____ | 6-68 + 7-1 + 0-88 (4:2:1) |
| | 7MB _____ | 7-55 + 0-33 (10:1) | | 6KG _____ | 6-77 |
| PEARL | 6NP _____ | 6-63 | | 7KG _____ | 7-77 |
| <i>PERLA</i> | 7NP _____ | 7-1 + 9.5-18 (3:1) | | 8KG _____ | 8-77 |
| | 8NP _____ | 8-211 + 8-19 + 8-4 (1:1:1) | | 9KG _____ | 8-77 |
| | 10P _____ | 9.5-1 | | 6KR _____ | 5-7 |
| | | | | 7KR _____ | 6-77 |
| | | | | 7KV _____ | 7-57 + 8-55 + 0-88 (4:2:1) |
| | | | | 6KS _____ | 5-57 |
| | | | | 7KB _____ | 6-65 + 6-77 (2:1) |
| | | | | 8KN _____ | 8-65 |

| | Topchic | IGORA ROYAL | | Topchic | IGORA ROYAL |
|--|-----------|-------------------------------|--------------------|-------------|--------------------|
| RED <i>ROJO</i> | 4R ____ | 3-68 | TOPCHIC | 700 ____ | - |
| | 5R ____ | 4-68 | MAX RED | 6RO ____ | 6-88 |
| | 6R ____ | 6-68 | <i>TOPCHIC MAX</i> | 7RO ____ | 8-77 + 0-88 (1:1) |
| | 5RB ____ | 5-68 | <i>ROJO</i> | 8RO ____ | 8-77 + 0-88 (3:2) |
| | 6RB ____ | 6-68 | | 5RR ____ | 6-88 |
| | 7RB ____ | 8-176 + 6-68 (1:1) | | 6RR ____ | 6-88 |
| | 8RB ____ | 8-176 + 7-4 (1:1) | | 7RR ____ | 6-88 + D-0 (1:1) |
| | 5RV ____ | 5-88 | | 5RS ____ | 5-7 + 6-88 (1:1) |
| | 6RV ____ | 6-88 + D-0 + 0-89 (2:2:1) | | 5W ____ | 9-98 |
| | | | | 6W ____ | 9-98 + 9.5-0 (3:1) |
| VIOLET <i>VIOLETA</i> | 4V ____ | 4-99 | TOPCHIC MAX | A-Mix ____ | 0-22 |
| | 10V ____ | 9-1 | <i>TOPCHIC MAX</i> | P-Mix ____ | - |
| | 3VR ____ | 4-99 | | GG-Mix ____ | 0-55 |
| | 5VR ____ | 6-99 | | KK-Mix ____ | 0-77 |
| | 6VR ____ | 6-68 + 6-88 + 0-99 (5:1:0.05) | | RR-Mix ____ | 0-88 |
| | 5VA ____ | 6-99 + 0-22 (5:1) | | W-Mix ____ | 0-99 |
| HIGHLIFT BLONDES <i>RUBIOS</i> <i>SUPERACLARANTES</i> | 11N ____ | 12-0 | TOPCHIC | VR ____ | L -89 |
| | 11A ____ | 12-11 | EFFECTS | K ____ | L -77 |
| | 11SV ____ | 12-1 + 12-0 (2:1) | <i>EFFECTOS</i> | R ____ | L -88 |
| | 11P ____ | 12-1 | <i>TOPCHIC</i> | RV ____ | L -89 |
| | 11G ____ | 10-4 | | KR ____ | - |
| | 11GB ____ | 10-4 | | | |
| | 11V ____ | 12-19 | | | |
| | 12GN ____ | 12-0 | | | |
| | 12BG ____ | 12-0 | | | |
| | 12BM ____ | 12-0 + 12-2 (15:1) | | | |
| | 12BN ____ | 12-0 | | | |
| | 12BS ____ | 12-1 | | | |
| TRIFLECTIVE NATURALS <i>NATURALES</i> <i>TRIFLECTIV</i> | 7NGP ____ | 6-6 | | | |
| | 9NGP ____ | 9-65 | | | |
| | 6NGB ____ | 7-00 | | | |
| | 7NGB ____ | 6-5 | | | |
| | 8NGB ____ | 8-4 | | | |
| | 5NBP ____ | 4-0 | | | |
| | 6NBP ____ | 6-4 | | | |
| | 7NBP ____ | 6-6 | | | |
| | 8NBP ____ | 8-65 | | | |
| | 9NBP ____ | 9-65 | | | |
| | 6NBK ____ | 5-65 | | | |
| | 7NBK ____ | 5-57 | | | |
| | 6NBR ____ | 4-6 | | | |



CONTACTS

If you have any further questions regarding the conversion to IGORA Royal, please contact the SKP hotline 1-800-234-4672 or the Schwarzkopf Professional webpage.

CONTACTO

Si tienes más preguntas sobre la conversión a IGORA Royal llámanos a nuestra línea directa o contacta a través de la web de Schwarzkopf Professional.

www.Schwarzkopf-ProfessionalUSA.com